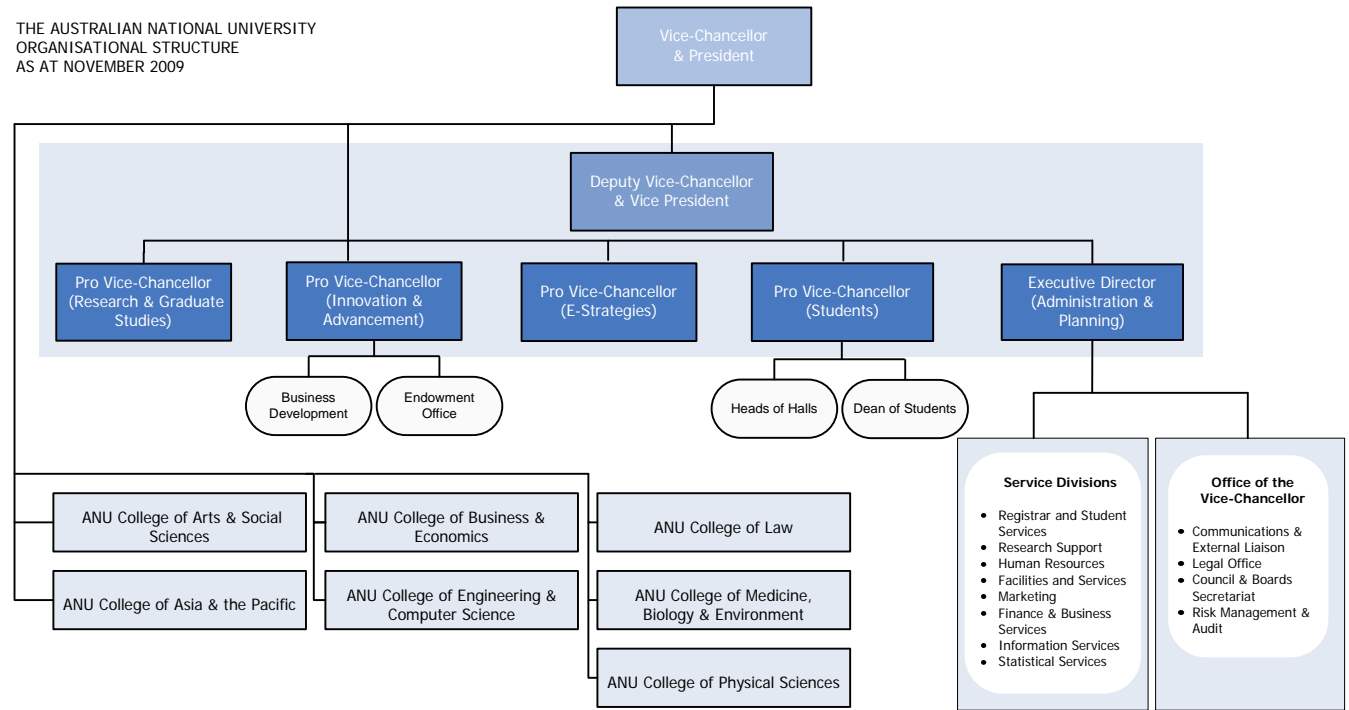


THE AUSTRALIAN NATIONAL UNIVERSITY
 ORGANISATIONAL STRUCTURE
 AS AT NOVEMBER 2009



ANU College of Arts & Social Sciences

ANU College of Asia & the Pacific

ANU College of Business & Economics

ANU College of Engineering & Computer Science

ANU College of Law

ANU College of Medicine, Biology & Environment

ANU College of Physical Sciences

- Service Divisions**
- Registrar and Student Services
 - Research Support
 - Human Resources
 - Facilities and Services
 - Marketing
 - Finance & Business Services
 - Information Services
 - Statistical Services

- Office of the Vice-Chancellor**
- Communications & External Liaison
 - Legal Office
 - Council & Boards Secretariat
 - Risk Management & Audit