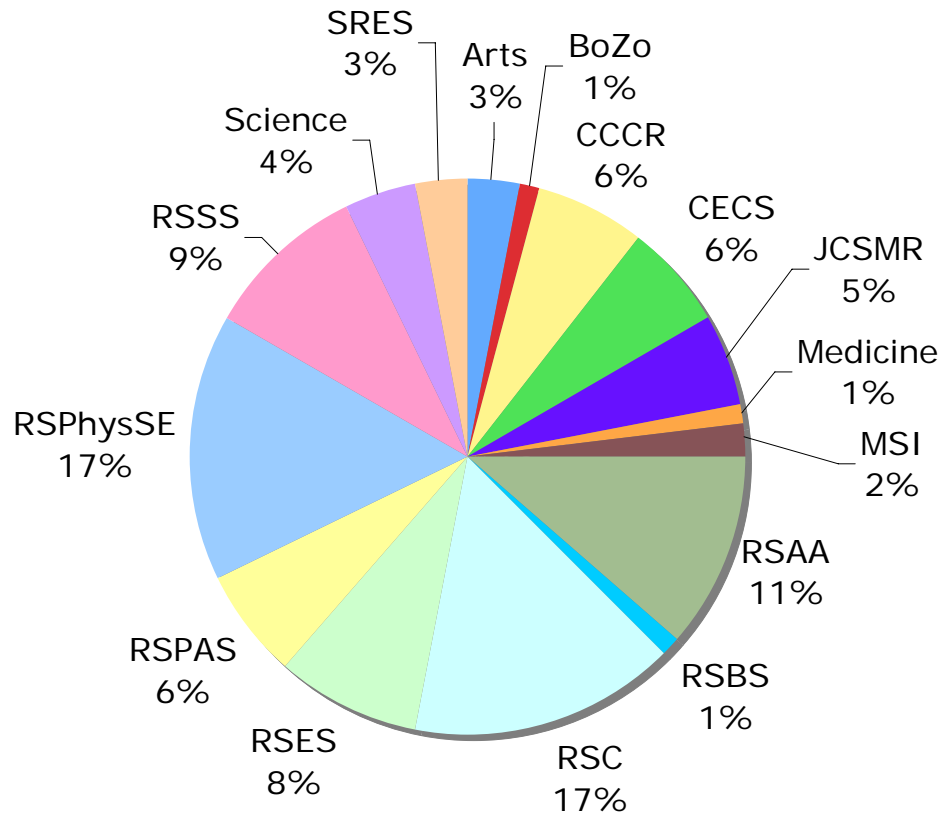


e-Research Task Force

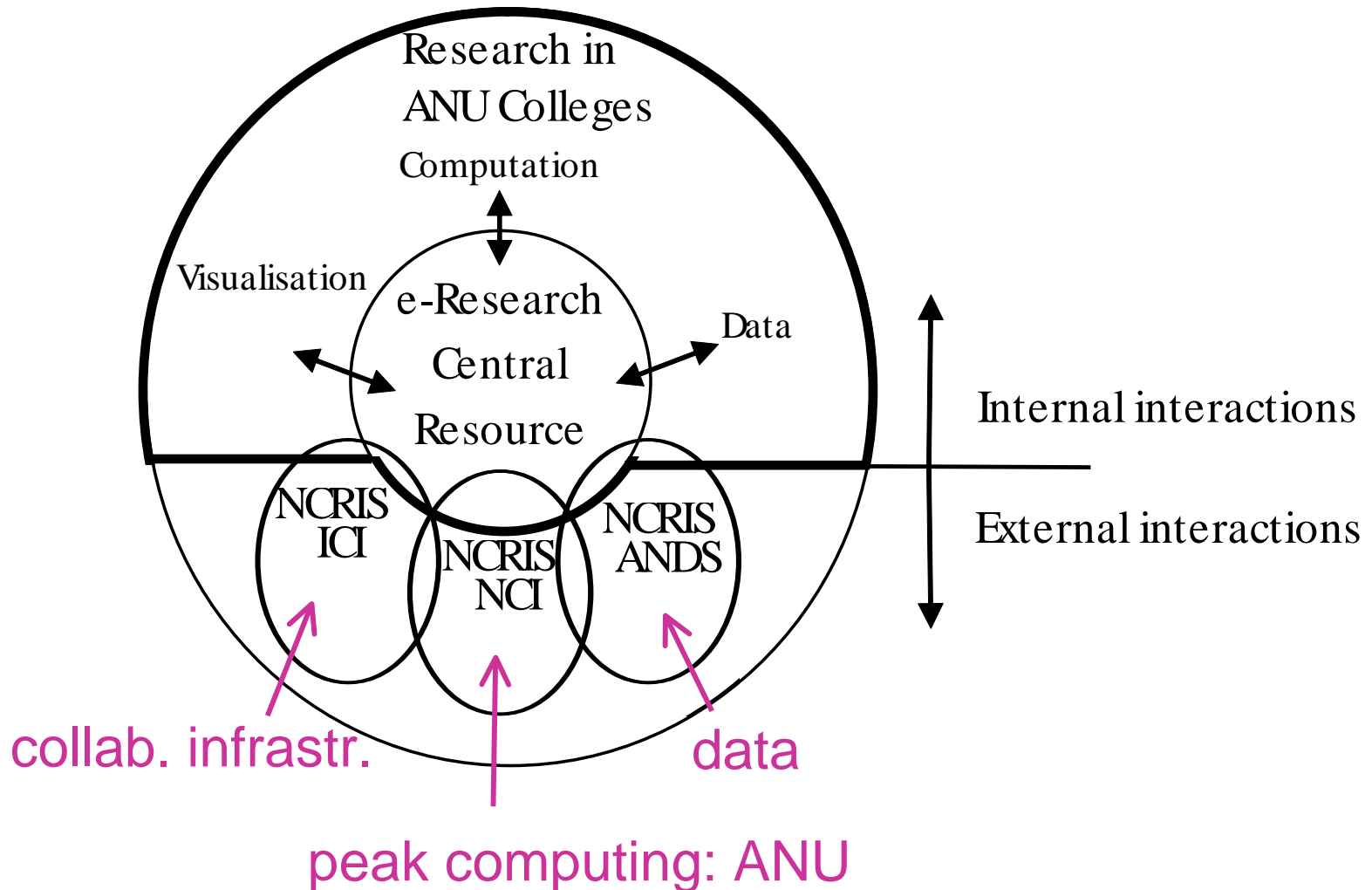
- Review e-Research at ANU
- Review provision of Central resources
- Survey of users
- Better harness and coordinate resources across ANU
- Take account of external drivers: APAC, NCRIS and National e-Research agenda

ANU e-Research projects by School/Faculty

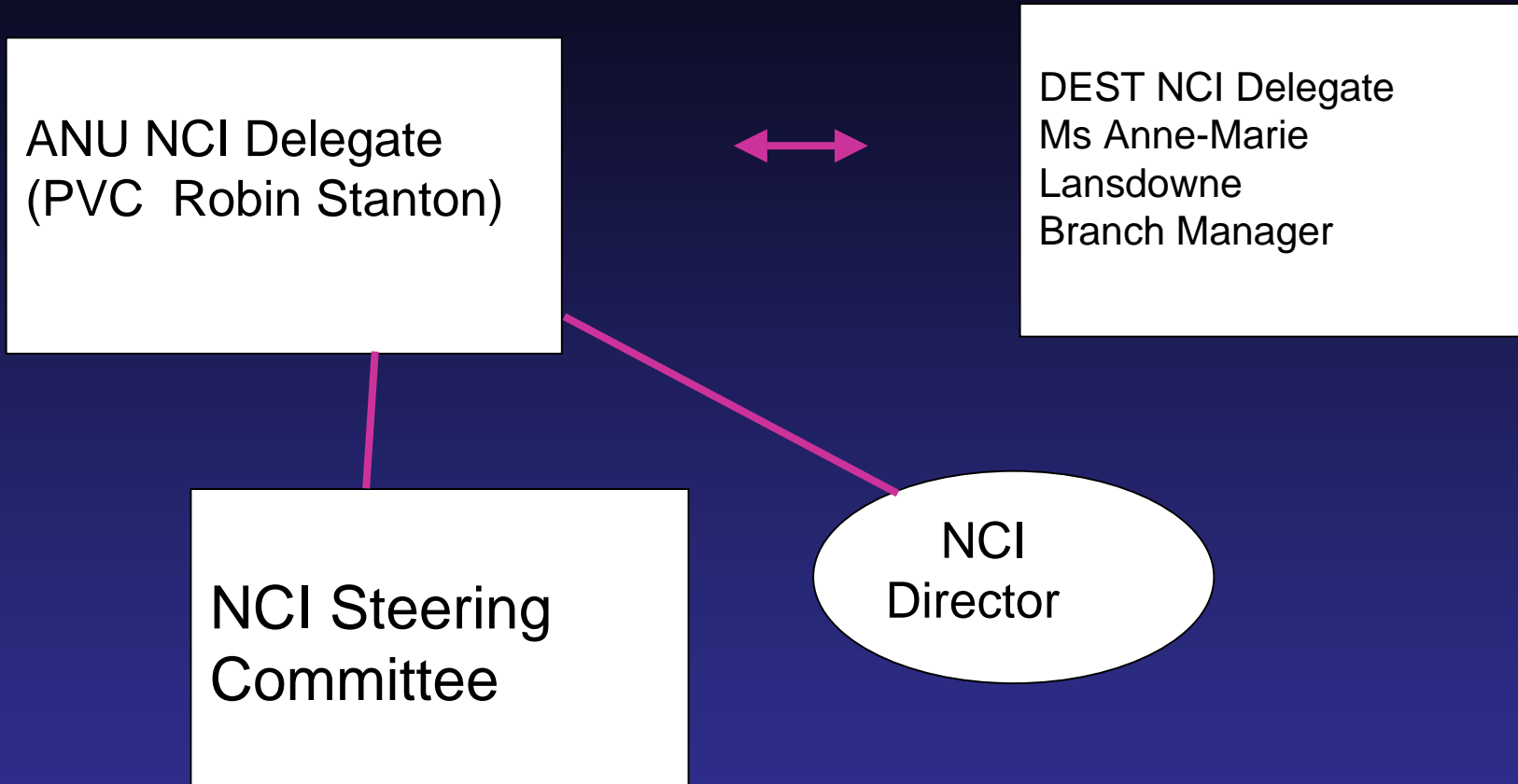


E-Research Interactions

ANU e-Research Centre



NCI Organisational Structure



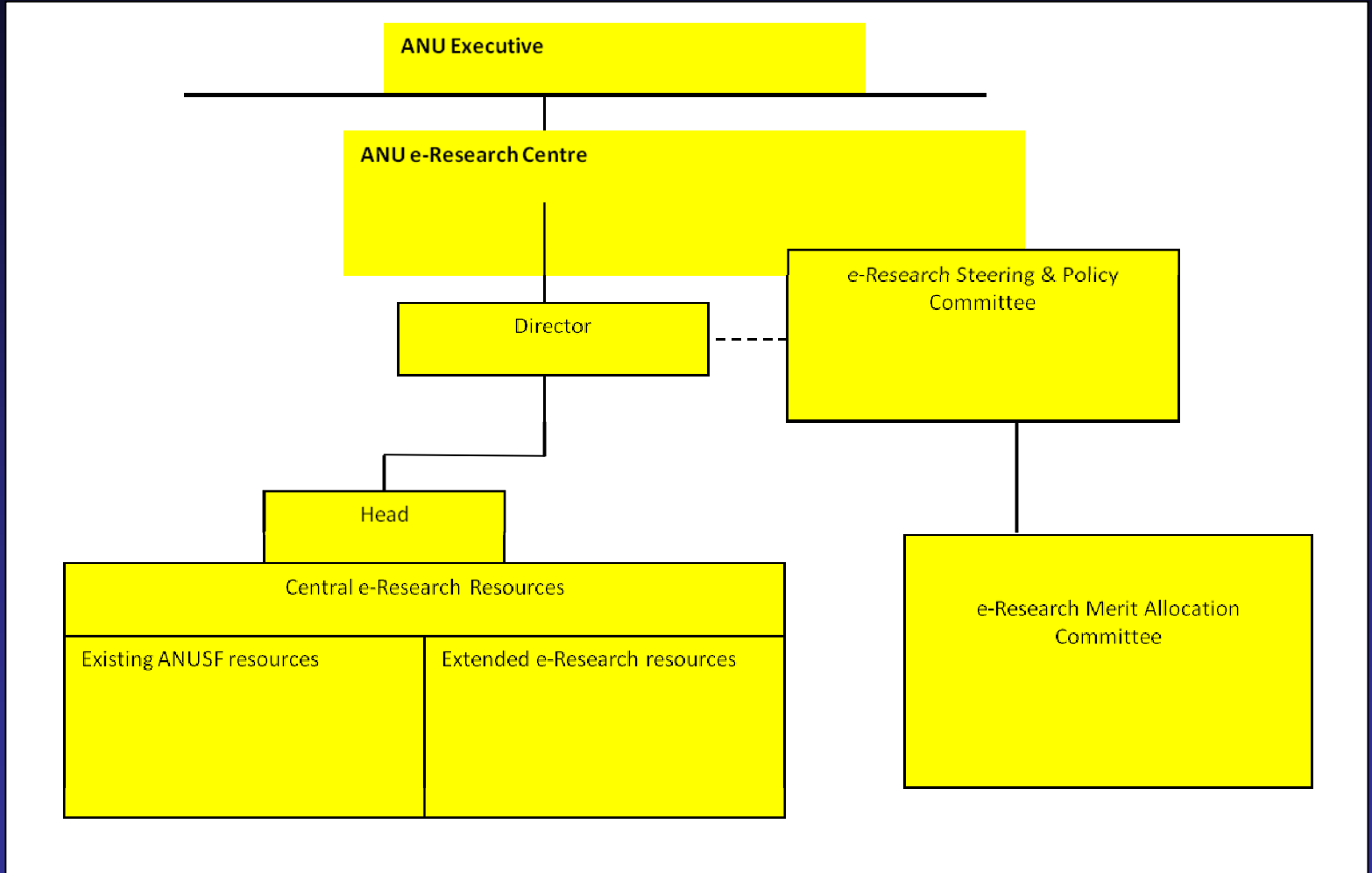
Recommendations

- 1. The ANU establish a cohesive cross-campus e-Research Centre, with a full-time Director.*
- 2. ANU puts in place an appropriate Centre Governance structure and e-Research policy.*
- 3. The Advanced IT Advisory Committee (AITAC) should evolve into a cross-campus e-Research Steering and Policy Committee with a broader role than the existing AITAC.*
- 4. New resources should be provided to establish and sustain the Centre. The Task Force proposes a new recurrent allocation of around \$1.5million per annum.*
- 5. Procedures must be established to provide an enabling environment, encouraging full engagement with the Centre and the Central e-Research resources.*
- 6. The ANU builds upon the successful ANU supercomputer facility as the central resource for e-Research services and provides an appropriate career structure for Centre staff.*
- 7. That the e-Research Steering and Policy Committee develop the mechanisms and processes to facilitate full internal and external engagement with the ANU e-Research agenda.*
- 8. That the ANU establish, as a priority, a working party to investigate present and future needs of e-Education.*

Recommendations

- 1. The ANU establish a cohesive cross-campus e-Research Centre, with a full-time Director.*
- 2. ANU puts in place an appropriate Centre Governance structure and e-Research policy.*
- 3. The Advanced IT Advisory Committee (AITAC) should evolve into a cross-campus e-Research Steering and Policy Committee with a broader role than the existing AITAC.*
- 4. New resources should be provided to establish and sustain the Centre. The Task Force proposes a new recurrent allocation of around \$1.5million per annum.*
- 5. Procedures must be established to provide an enabling environment, encouraging full engagement with the Centre and the Central e-Research resources.*
- 6. The ANU builds upon the successful ANU supercomputer facility as the central resource for e-Research services and provides an appropriate career structure for Centre staff.*
- 7. That the e-Research Steering and Policy Committee develop the mechanisms and processes to facilitate full internal and external engagement with the ANU e-Research agenda.*
- 8. That the ANU establish, as a priority, a working party to investigate present and future needs of e-Education.*

E-Research Organisational Structure



Recommendations

- 1. The ANU establish a cohesive cross-campus e-Research Centre, with a full-time Director.*
- 2. ANU puts in place an appropriate Centre Governance structure and e-Research policy.*
- 3. The Advanced IT Advisory Committee (AITAC) should evolve into a cross-campus e-Research Steering and Policy Committee with a broader role than the existing AITAC.*
- 4. New resources should be provided to establish and sustain the Centre. The Task Force proposes a new recurrent allocation of around \$1.5million per annum.*
- 5. Procedures must be established to provide an enabling environment, encouraging full engagement with the Centre and the Central e-Research resources.*
- 6. The ANU builds upon the successful ANU supercomputer facility as the central resource for e-Research services and provides an appropriate career structure for Centre staff.*
- 7. That the e-Research Steering and Policy Committee develop the mechanisms and processes to facilitate full internal and external engagement with the ANU e-Research agenda.*
- 8. That the ANU establish, as a priority, a working party to investigate present and future needs of e-Education.*

E-Research Resources and ANUSF

- New resources to: seed (incubate) new projects; support common advanced computing infrastructure and methods in research that arise from growing e-Research needs and/or opportunities and involve high performance computation and modelling, data, and visualisation.
- New resources to: fund an enhanced Central resource, new people, fellowships, infrastructure and leveraging.
- Expand the role of a Merit Allocation Committee to recommend resource allocation.
- Recognise and address the career opportunities for Central Resource staff: joint appointments, affiliations, professional officer classifications?

Funds Requested

ITEM	ALLOCATION (\$)
*Director's salary and office	250,000
*New staff and futures	300,000
*Seeding new e-Research projects	750,000
Additional HPC reserve	400,000
*Fellowships program	400,000
Leveraging funds	0
TOTAL	1,500,000

Recommendations

- 1. The ANU establish, as a matter of urgency, a cohesive cross-campus e-Research Centre, with a full-time Director.*
- 2. ANU puts in place an appropriate Centre Governance structure and e-Research policy.*
- 3. The Advanced IT Advisory Committee (AITAC) should evolve into a cross-campus e-Research Steering and Policy Committee with a broader role than the existing AITAC.*
- 4. New resources should be provided to establish and sustain the Centre. The Task Force proposes a new recurrent allocation of around \$1.5million per annum.*
- 5. Procedures must be established to provide an enabling environment, encouraging full engagement with the Centre and the Central e-Research resources.*
- 6. The ANU builds upon the successful ANU supercomputer facility as the central resource for e-Research services and provides an appropriate career structure for Centre staff.*
- 7. That the e-Research Steering and Policy Committee develop the mechanisms and processes to facilitate full internal and external engagement with the ANU e-Research agenda.*
- 8. That the ANU establish, as a priority, a working party to investigate present and future needs of e-Education.*